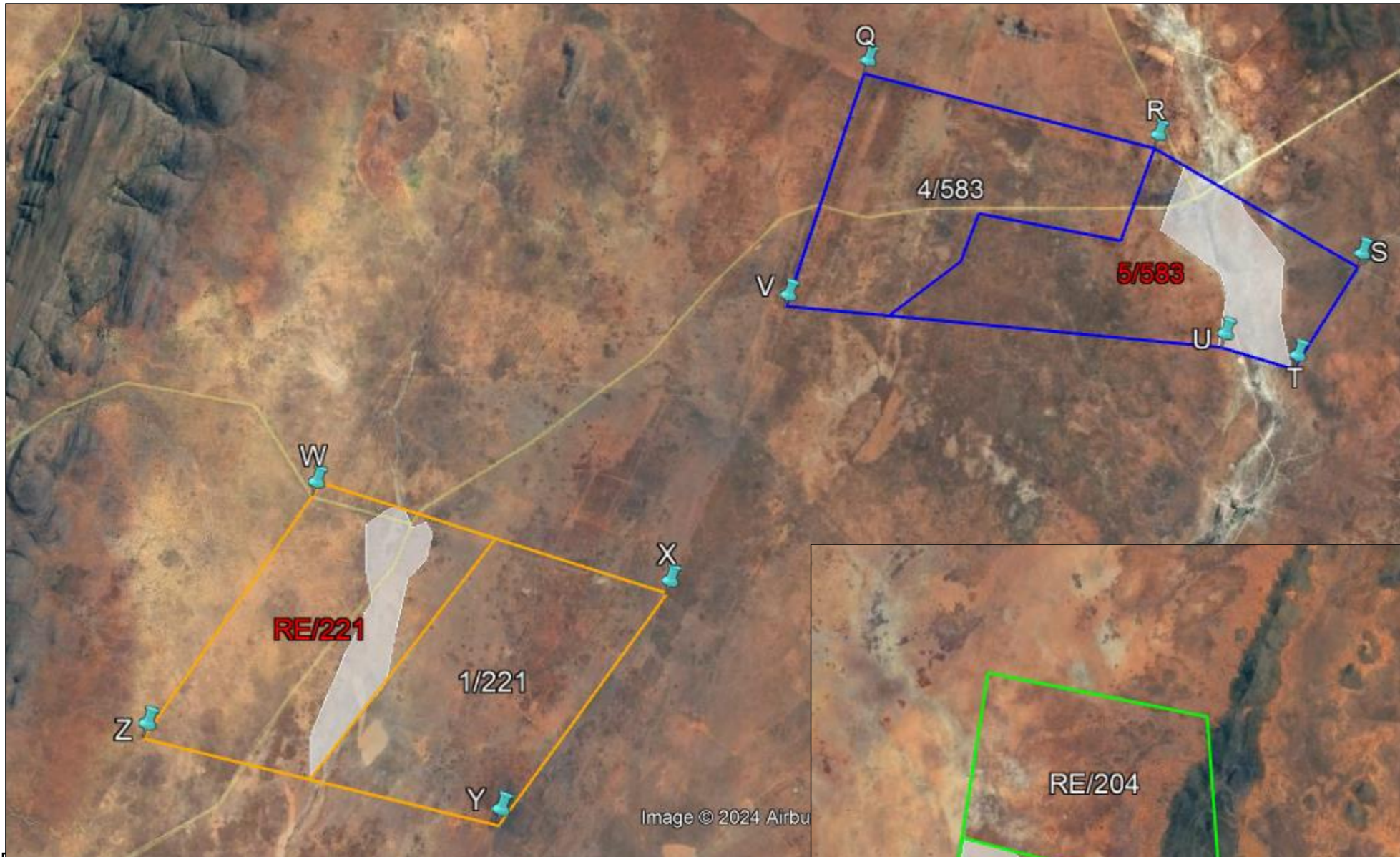


**REHABILITATION MAP FOR THE K2022641005 (SOUTH AFRICA) (PTY) LTD PROPOSED INVASIVE PROSPECTING RIGHT AREAS  
NC 30/5/1/1/2/13826 PR**

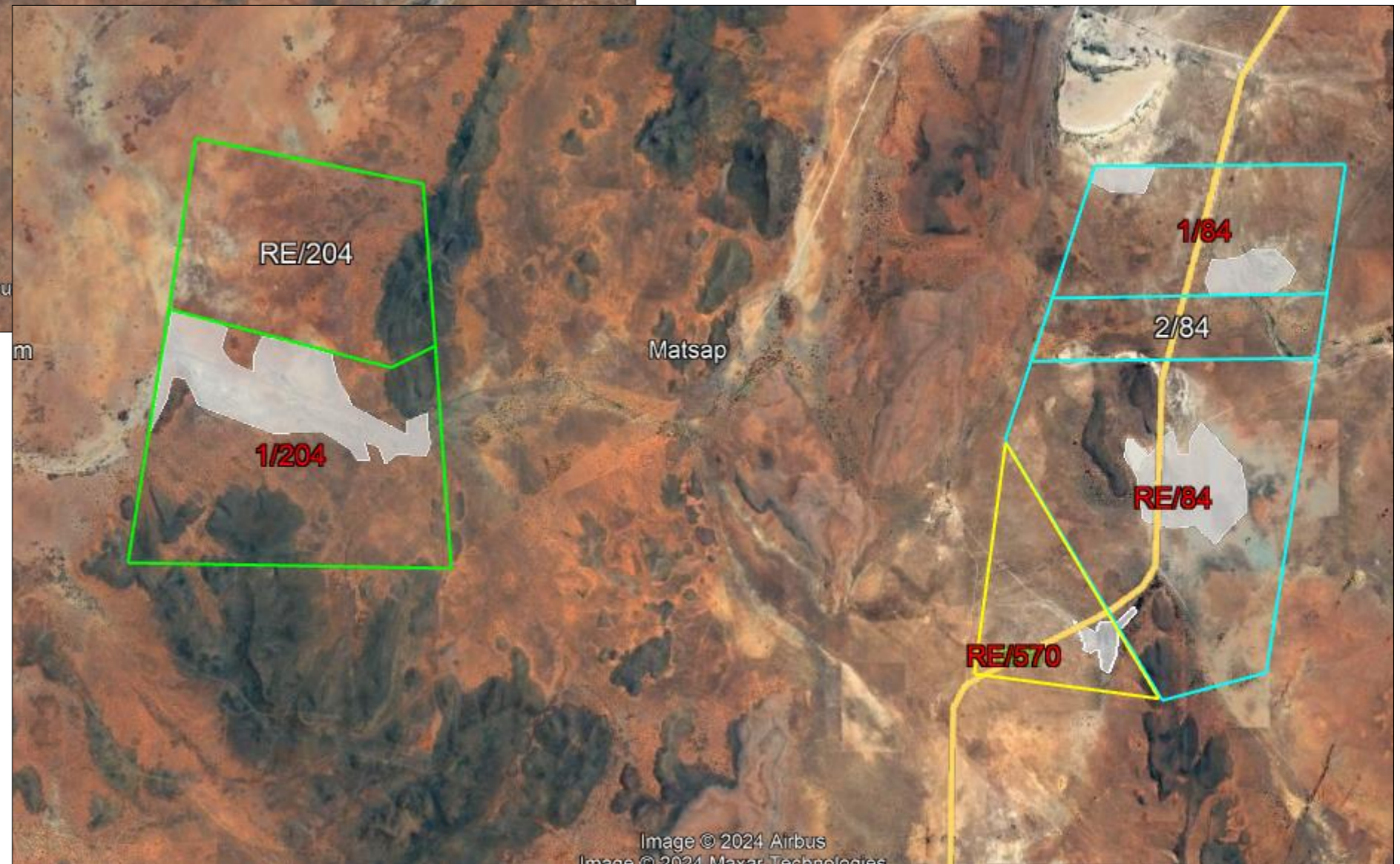


Rehabilitation will include activities that can be divided into medium- and long term categories.

In the medium term, rehabilitation will entail the continuous reinstatement of prospected areas, and the management of invasive plant species and/or erosion.

In the long term, rehabilitation will involve the reinstatement of the remaining disturbed areas (not yet reinstated), prior to the submission of a closure application to the DMRE. The Applicant will further be responsible for the seeding of all rehabilitated areas should vegetation not establish through succession within the first six months. The future land use of the rehabilitated footprint will be grazing.

The Applicant will comply with the minimum closure objectives as prescribed by the DMRE.



The project proposal was amended following a remote sensing exercise to target the farms with the greatest mineral potential. If mineralisation is confirmed, the study areas will be geologically mapped in detail to determine the extents of the mineralisation and provide a basis for additional exploration to quantify the mineralisation. Invasive prospecting will then only target the farms/areas with promising results. Presently it is proposed that invasive prospecting will be conducted in the target areas of Bermolli No 583/5, Engelsdraai No 221/RE, Witdraai No 204/1, Vaalwater No 84/1 & RE, and Farm No 570 (Zaai Plaats).

