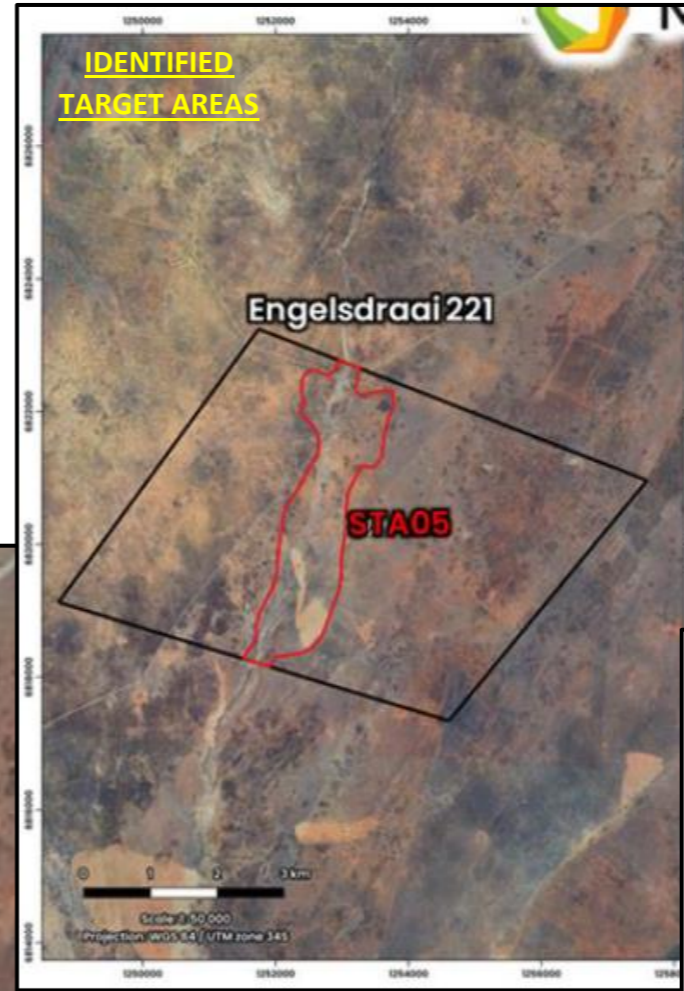
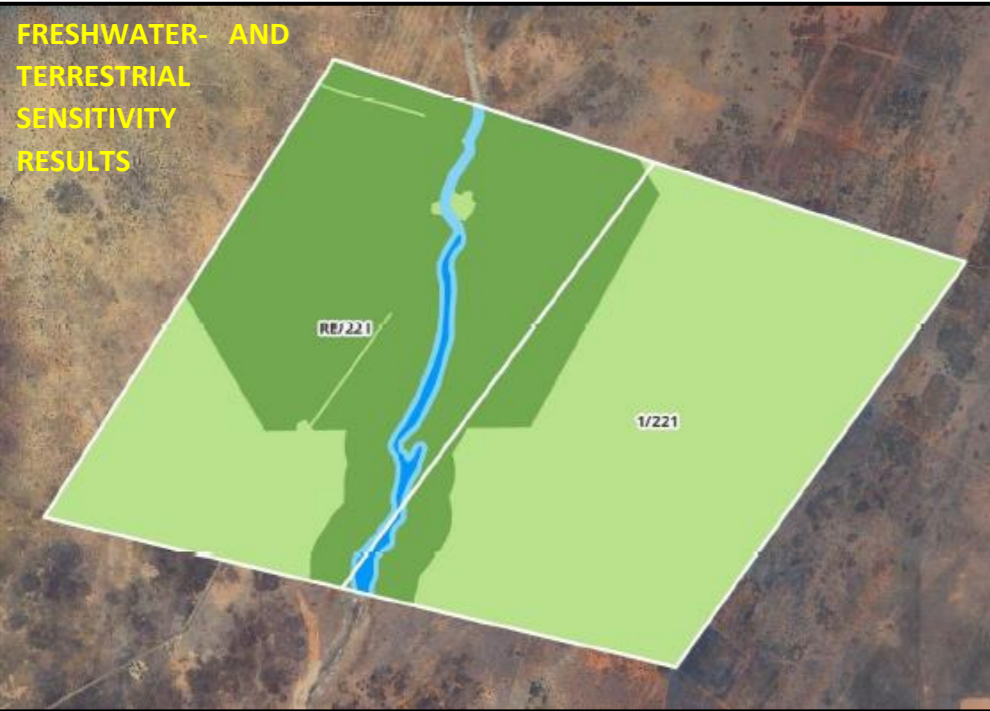


PRELIMINARY SITE PLAN FOR THE K2022641005 (SOUTH AFRICA) (PTY) LTD PROPOSED INVASIVE PROSPECTING AREAS
OVER THE REMAINING EXTENT OF ENGELSDRAAI NO 221 - NC 30/5/1/1/2/13826 PR

FRESHWATER AND
TERRESTRIAL
SENSITIVITY
RESULTS



ENGELSDRAAI NO 221/RE = INVASIVE PROSPECTING
ENGELSDRAAI NO 221/1 = NON-INVASIVE PROSPECTING

SAMPLING PLAN TO BE DETERMINED AND SITE CAMP
LOCATION TO BE NEGOTIATED WITH THE
LANDOWNER/S.

REMOTE SENSING RESULTS

