

**SCREENING REPORT FOR AN ENVIRONMENTAL AUTHORIZATION AS
REQUIRED BY THE 2014 EIA REGULATIONS – PROPOSED SITE
ENVIRONMENTAL SENSITIVITY**

EIA Reference number: TBC

Project name: Power Construction

Project title: Power Construction

Date screening report generated: 14/10/2024 11:37:12

Applicant: Power Construction (Pty) Ltd

Compiler: GE

Compiler signature:

.....

Application Category: Mining|Mining Permit

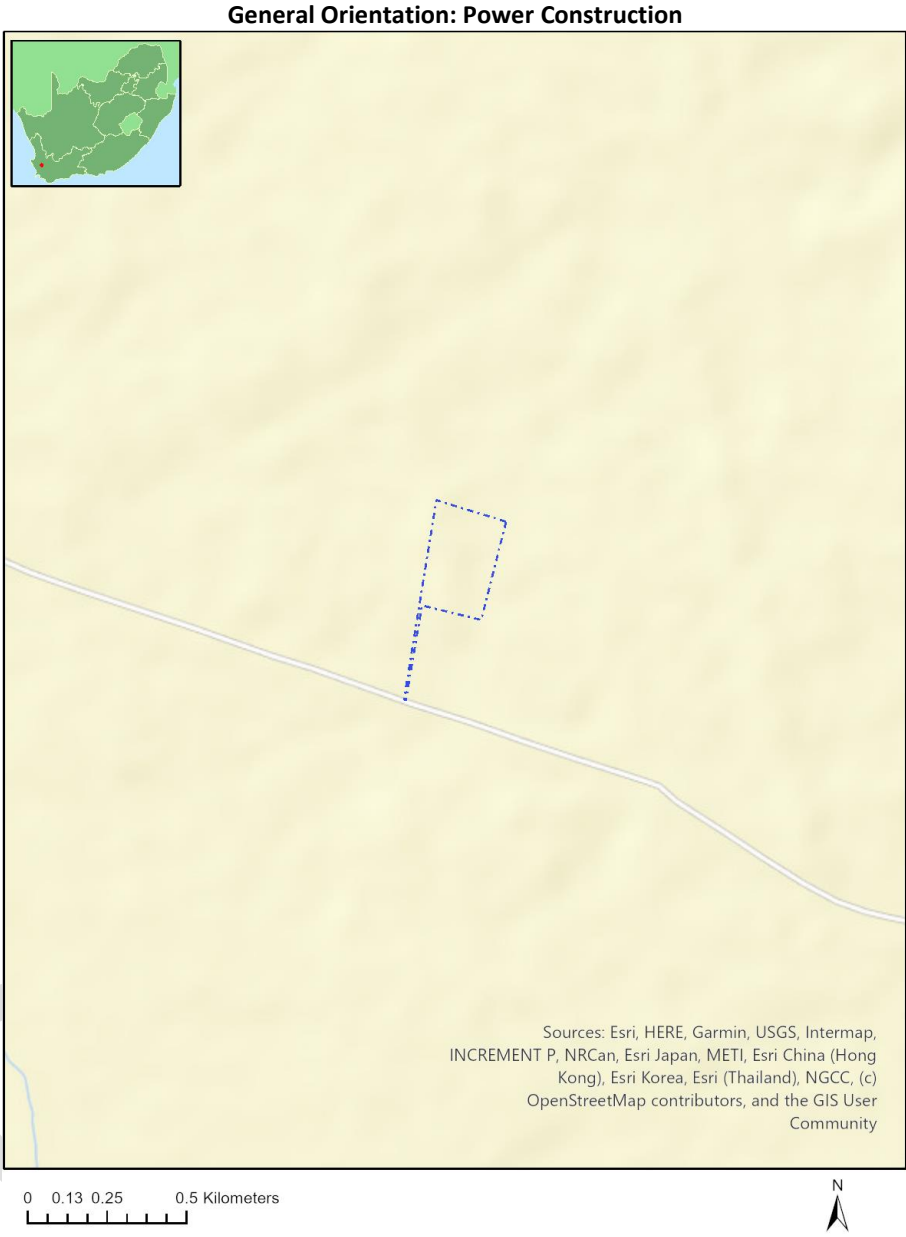
OFFICIAL

Table of Contents

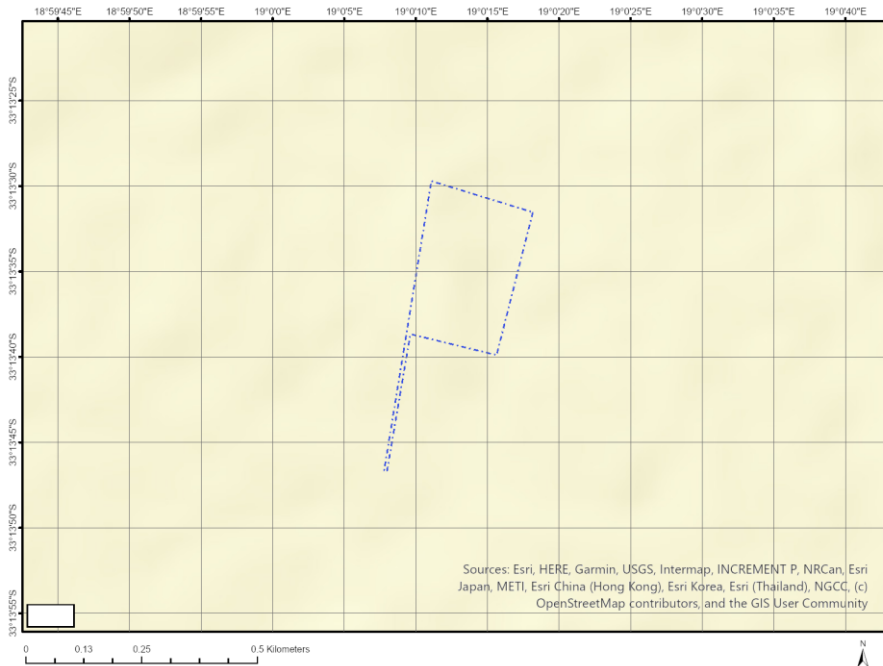
- Proposed Project Location 3
 - Orientation map 1: General location 3
- Map of proposed site and relevant area(s) 4
 - Cadastral details of the proposed site 4
 - Wind and Solar developments with an approved Environmental Authorisation or applications under consideration within 30 km of the proposed area 4
 - Environmental Management Frameworks relevant to the application 5
- Environmental screening results and assessment outcomes 5
 - Relevant development incentives, restrictions, exclusions or prohibitions 5
 - Proposed Development Area Environmental Sensitivity 5
 - Specialist assessments identified 6
- Results of the environmental sensitivity of the proposed area 8
 - MAP OF RELATIVE AGRICULTURE THEME SENSITIVITY 8
 - MAP OF RELATIVE ANIMAL SPECIES THEME SENSITIVITY 9
 - MAP OF RELATIVE AQUATIC BIODIVERSITY THEME SENSITIVITY 10
 - MAP OF RELATIVE ARCHAEOLOGICAL AND CULTURAL HERITAGE THEME SENSITIVITY 11
 - MAP OF RELATIVE CIVIL AVIATION THEME SENSITIVITY 12
 - MAP OF RELATIVE DEFENCE THEME SENSITIVITY 13
 - MAP OF RELATIVE PALEONTOLOGY THEME SENSITIVITY 14
 - MAP OF RELATIVE PLANT SPECIES THEME SENSITIVITY 15
 - MAP OF RELATIVE TERRESTRIAL BIODIVERSITY THEME SENSITIVITY 18

Proposed Project Location

Orientation map 1: General location



Map of proposed site and relevant area(s)



Cadastral details of the proposed site

Property details:

No	Farm Name	Farm/ Erf No	Portion	Latitude	Longitude	Property Type
1	BONNE ESPERANCE	83	0	33°13'48.03S	19°1'41.36E	Farm
2	BONNE ESPERANCE	83	2	33°14'2.4S	19°0'7.47E	Farm Portion

Development footprint¹ vertices:

No development footprint(s) specified.

Wind and Solar developments with an approved Environmental Authorisation or applications under consideration within 30 km of the proposed area

No	EIA Reference No	Classification	Status of application	Distance from proposed area (km)
1	12/12/20/2227	Wind	Approved	4
2	12/12/20/1859/AM3	Wind	Approved	2
3	14/12/16/3/3/2/961/AM3	Wind	Approved	25.2

¹ "development footprint", means the area within the site on which the development will take place and includes all ancillary developments for example roads, power lines, boundary walls, paving etc. which require vegetation clearance or which will be disturbed and for which the application has been submitted.

4	14/12/16/3/3/2/322/AM2	Wind	Approved	0
5	12/12/20/2394	Solar PV	Approved	28.1
6	14/12/16/3/3/2/961	Wind	Approved	25.2
7	14/12/16/3/3/2/2105	Wind	Approved	2.2
8	12/12/20/1859	Wind	Approved	2
9	14/12/16/3/3/2/961/AM1	Wind	Approved	25.2
10	12/12/20/2394/AM1	Solar PV	Approved	28.1
11	14/12/16/3/3/2/322	Wind	Approved	0
12	14/12/16/3/3/322	Wind	Approved	0
13	12/12/20/2400/AM2	Solar PV	Approved	17.1
14	12/12/20/2400	Solar PV	Approved	17.1

Environmental Management Frameworks relevant to the application

No intersections with EMF areas found.

Environmental screening results and assessment outcomes

The following sections contain a summary of any development incentives, restrictions, exclusions or prohibitions that apply to the proposed development site as well as the most environmental sensitive features on the site based on the site sensitivity screening results for the application classification that was selected. The application classification selected for this report is:

Mining | Mining Permit.

Relevant development incentives, restrictions, exclusions or prohibitions

The following development incentives, restrictions, exclusions or prohibitions and their implications that apply to this site are indicated below.

Incentive, restriction or prohibition	Implication
Strategic Transmission Corridor-Central corridor	https://screening.environment.gov.za/ScreeningDownloads/DevelopmentZones/Combined_EGI.pdf
Strategic Gas Pipeline Corridors-Phase 1a & 1b: Saldanha to Ankerlig and Saldanha to Mossel Bay	https://screening.environment.gov.za/ScreeningDownloads/DevelopmentZones/Combined_GAS.pdf

Proposed Development Area Environmental Sensitivity

The following summary of the development site environmental sensitivities is identified. Only the highest environmental sensitivity is indicated. The footprint environmental sensitivities for the proposed development footprint as identified, are indicative only and must be verified on site by a suitably qualified person before the specialist assessments identified below can be confirmed.

Theme	Very High sensitivity	High sensitivity	Medium sensitivity	Low sensitivity
Agriculture Theme		X		
Animal Species Theme			X	

Aquatic Biodiversity Theme				X
Archaeological and Cultural Heritage Theme				X
Civil Aviation Theme		X		
Defence Theme				X
Paleontology Theme			X	
Plant Species Theme			X	
Terrestrial Biodiversity Theme	X			

Specialist assessments identified

Based on the selected classification, and the known impacts associated with the proposed development, the following list of specialist assessments have been identified for inclusion in the assessment report. It is the responsibility of the EAP to confirm this list and to motivate in the assessment report, the reason for not including any of the identified specialist study including the provision of photographic evidence of the site situation.

No	Specialist assessment	Assessment Protocol
1	Agricultural Impact Assessment	https://screening.environment.gov.za/ScreeningDownloads/AssessmentProtocols/Gazetted_General_Agriculture_Assessment_Protocols.pdf
2	Archaeological and Cultural Heritage Impact Assessment	https://screening.environment.gov.za/ScreeningDownloads/AssessmentProtocols/Gazetted_General_Requirement_Assessment_Protocols.pdf
3	Palaeontology Impact Assessment	https://screening.environment.gov.za/ScreeningDownloads/AssessmentProtocols/Gazetted_General_Requirement_Assessment_Protocols.pdf
4	Terrestrial Biodiversity Impact Assessment	https://screening.environment.gov.za/ScreeningDownloads/AssessmentProtocols/Gazetted_Terrestrial_Biodiversity_Assessment_Protocols.pdf
5	Aquatic Biodiversity Impact Assessment	https://screening.environment.gov.za/ScreeningDownloads/AssessmentProtocols/Gazetted_Aquatic_Biodiversity_Assessment_Protocols.pdf
6	Hydrology Assessment	https://screening.environment.gov.za/ScreeningDownloads/AssessmentProtocols/Gazetted_General_Requirement_Assessment_Protocols.pdf
7	Noise Impact Assessment	https://screening.environment.gov.za/ScreeningDownloads/AssessmentProtocols/Gazetted_Noise_Impacts_Assessment_Protocol.pdf
8	Radioactivity Impact Assessment	https://screening.environment.gov.za/ScreeningDownloads/AssessmentProtocols/Gazetted_General_Requirement_Assessment_Protocols.pdf
9	Traffic Impact Assessment	https://screening.environment.gov.za/ScreeningDownloads/AssessmentProtocols/Gazetted_General_Requirement_Assessment_Protocols.pdf
10	Geotechnical Assessment	https://screening.environment.gov.za/ScreeningDownloads/AssessmentProtocols/Gazetted_General_Requirement_Assessment_Protocols.pdf
11	Socio-Economic Assessment	https://screening.environment.gov.za/ScreeningDownloads/AssessmentProtocols/Gazetted_General_Requirement_Assessment_Protocols.pdf

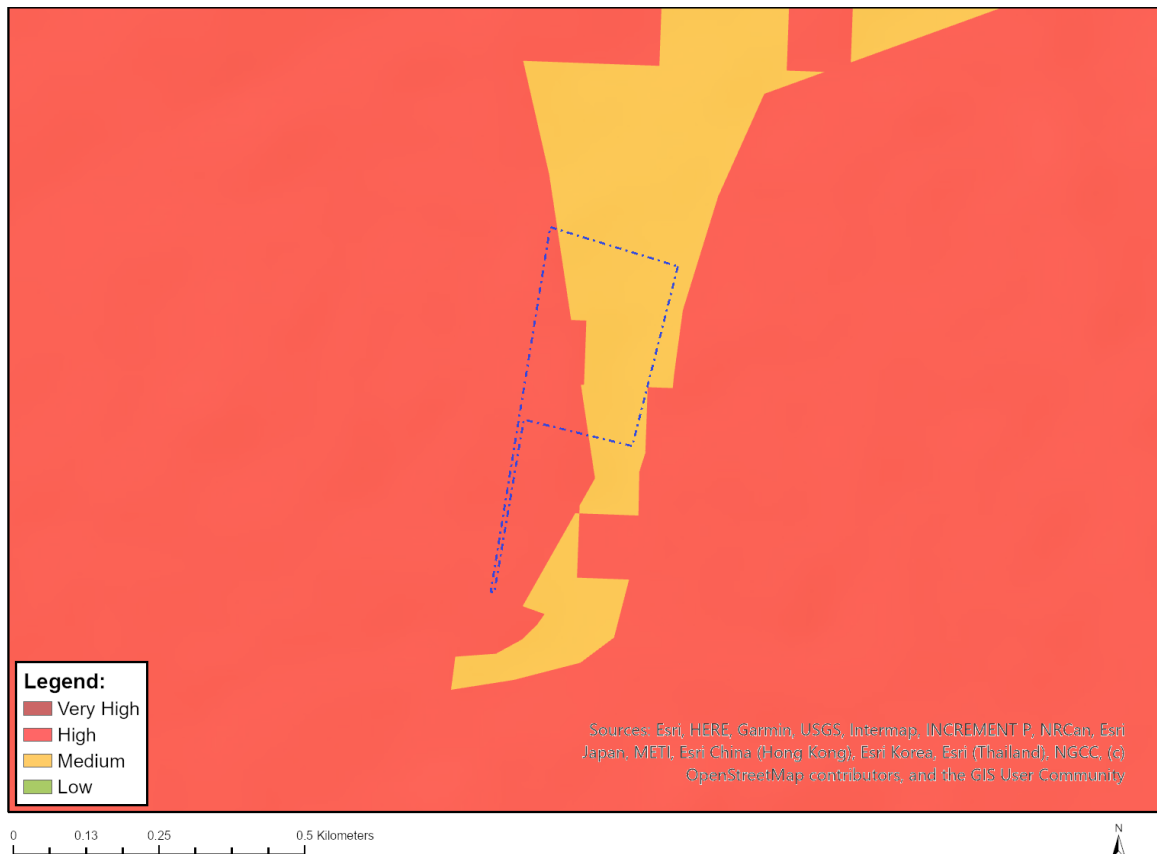
12	Plant Species Assessment	https://screening.environment.gov.za/ScreeningDownloads/AssessmentProtocols/Gazetted_Plant_Species_Assessment_Protocols.pdf
13	Animal Species Assessment	https://screening.environment.gov.za/ScreeningDownloads/AssessmentProtocols/Gazetted_Animal_Species_Assessment_Protocols.pdf

OFFICIAL

Results of the environmental sensitivity of the proposed area.

The following section represents the results of the screening for environmental sensitivity of the proposed site for relevant environmental themes associated with the project classification. It is the duty of the EAP to ensure that the environmental themes provided by the screening tool are comprehensive and complete for the project. Refer to the disclaimer.

MAP OF RELATIVE AGRICULTURE THEME SENSITIVITY

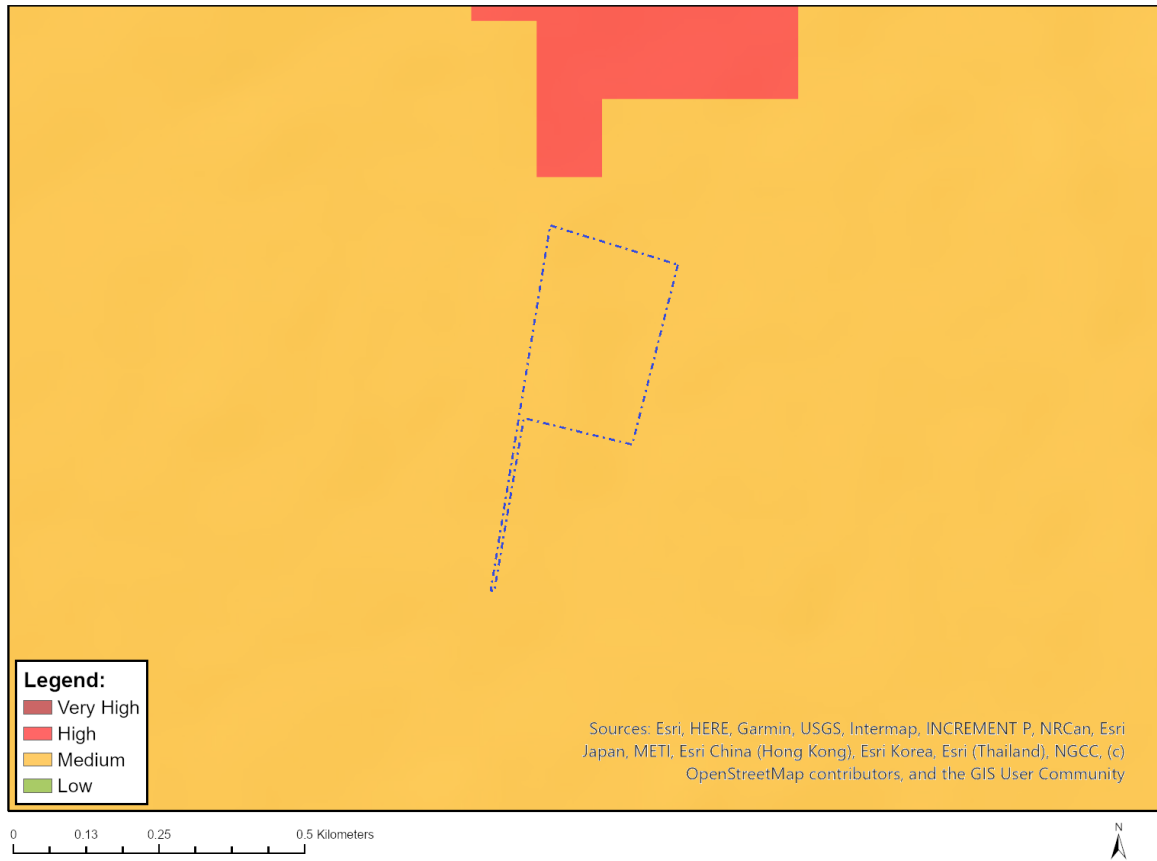


Very High sensitivity	High sensitivity	Medium sensitivity	Low sensitivity
	X		

Sensitivity Features:

Sensitivity	Feature(s)
High	Land capability;09. Moderate-High/10. Moderate-High
High	Annual Crop Cultivation / Planted Pastures Rotation;Land capability;09. Moderate-High/10. Moderate-High
High	Annual Crop Cultivation / Planted Pastures Rotation;Land capability;06. Low-Moderate/07. Low-Moderate/08. Moderate
Medium	Land capability;06. Low-Moderate/07. Low-Moderate/08. Moderate

MAP OF RELATIVE ANIMAL SPECIES THEME SENSITIVITY



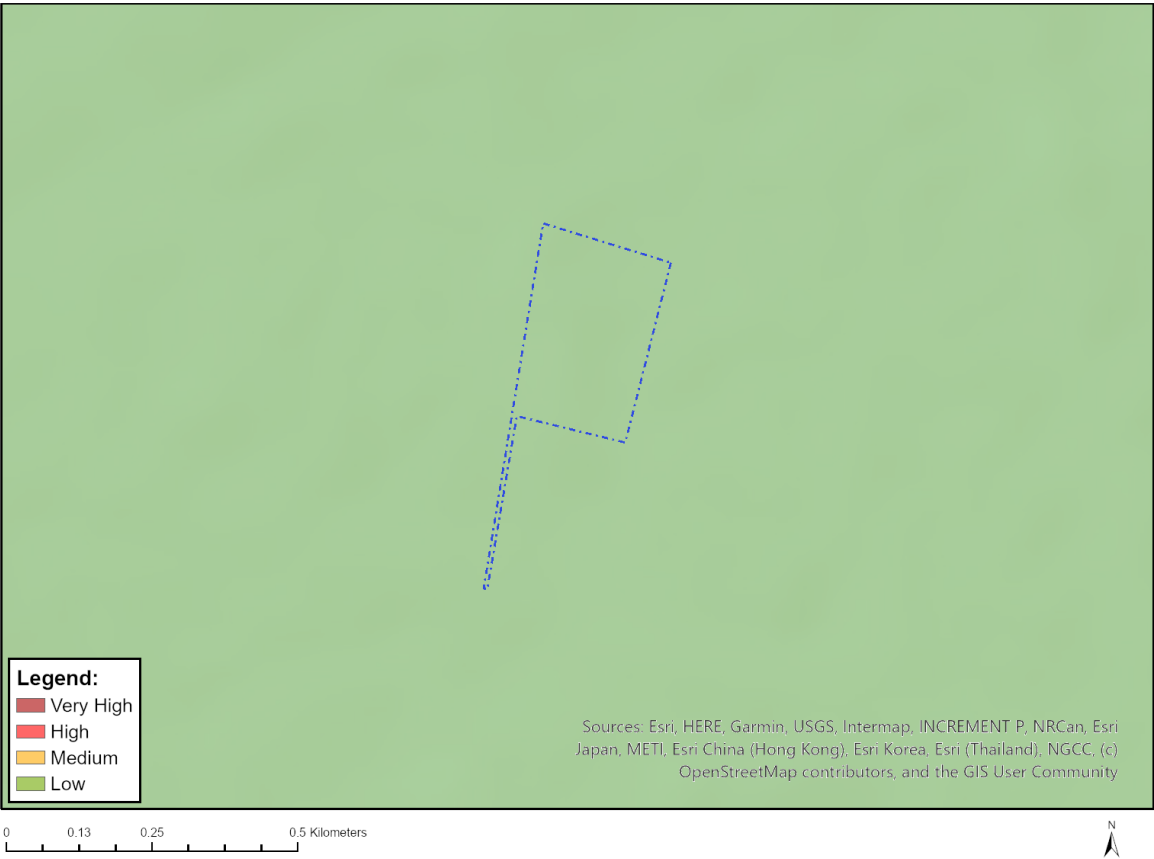
Where only a sensitive plant unique number or sensitive animal unique number is provided in the screening report and an assessment is required, the environmental assessment practitioner (EAP) or specialist is required to email SANBI at eiadatarequests@sanbi.org.za listing all sensitive species with their unique identifiers for which information is required. The name has been withheld as the species may be prone to illegal harvesting and must be protected. SANBI will release the actual species name after the details of the EAP or specialist have been documented.

Very High sensitivity	High sensitivity	Medium sensitivity	Low sensitivity
		X	

Sensitivity Features:

Sensitivity	Feature(s)
Medium	Sensitive species 19
Medium	Invertebrate-Brinckiella aptera
Medium	Invertebrate-Aneuryphymus montanus

MAP OF RELATIVE AQUATIC BIODIVERSITY THEME SENSITIVITY

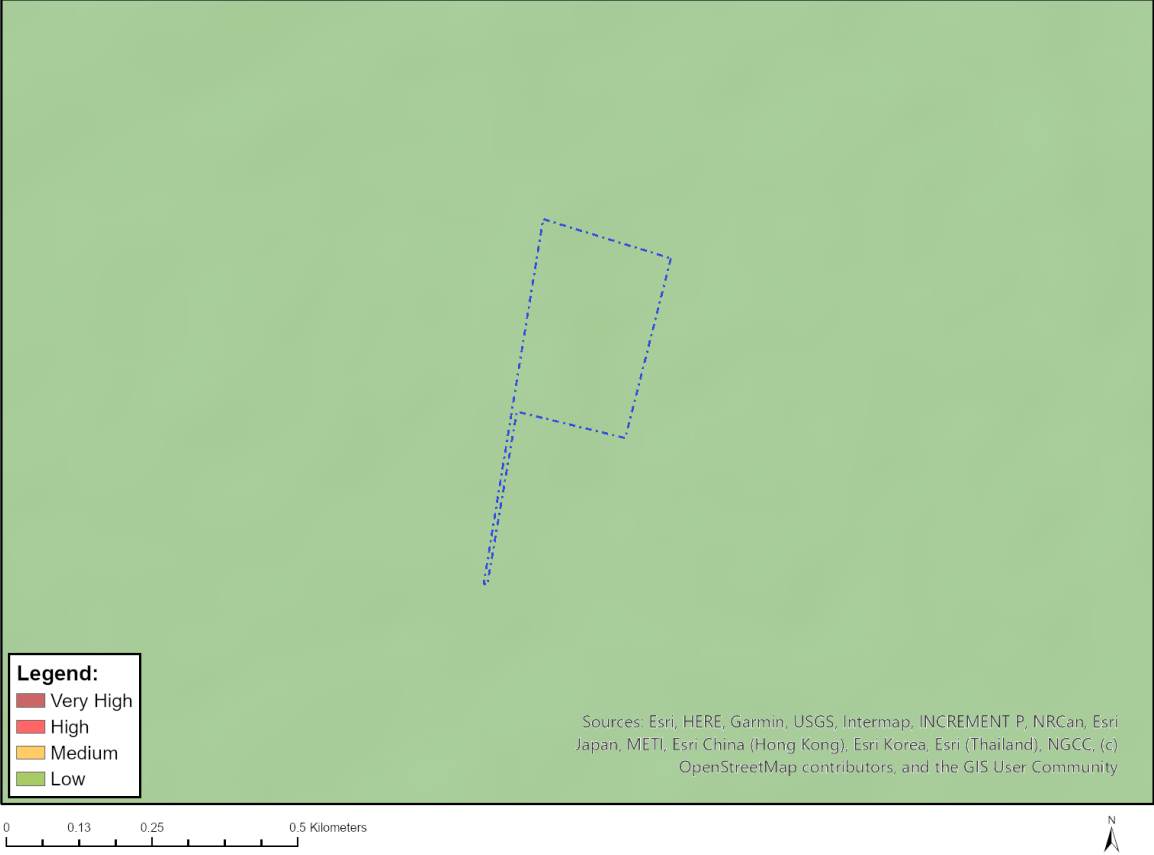


Very High sensitivity	High sensitivity	Medium sensitivity	Low sensitivity
			X

Sensitivity Features:

Sensitivity	Feature(s)
Low	Low sensitivity

MAP OF RELATIVE ARCHAEOLOGICAL AND CULTURAL HERITAGE THEME SENSITIVITY



Very High sensitivity	High sensitivity	Medium sensitivity	Low sensitivity
			X

Sensitivity Features:

Sensitivity	Feature(s)
Low	Low sensitivity

MAP OF RELATIVE CIVIL AVIATION THEME SENSITIVITY

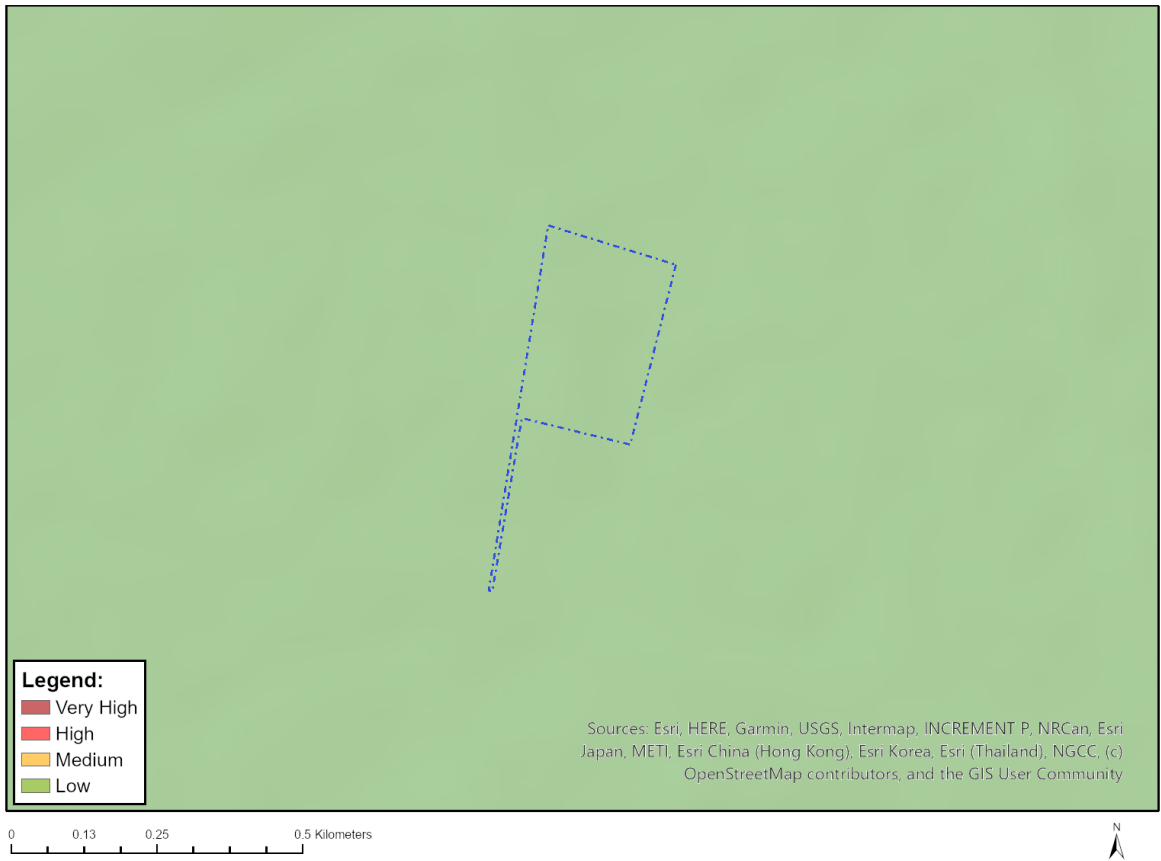


Very High sensitivity	High sensitivity	Medium sensitivity	Low sensitivity
	X		

Sensitivity Features:

Sensitivity	Feature(s)
High	Within 8 km of other civil aviation aerodrome

MAP OF RELATIVE DEFENCE THEME SENSITIVITY

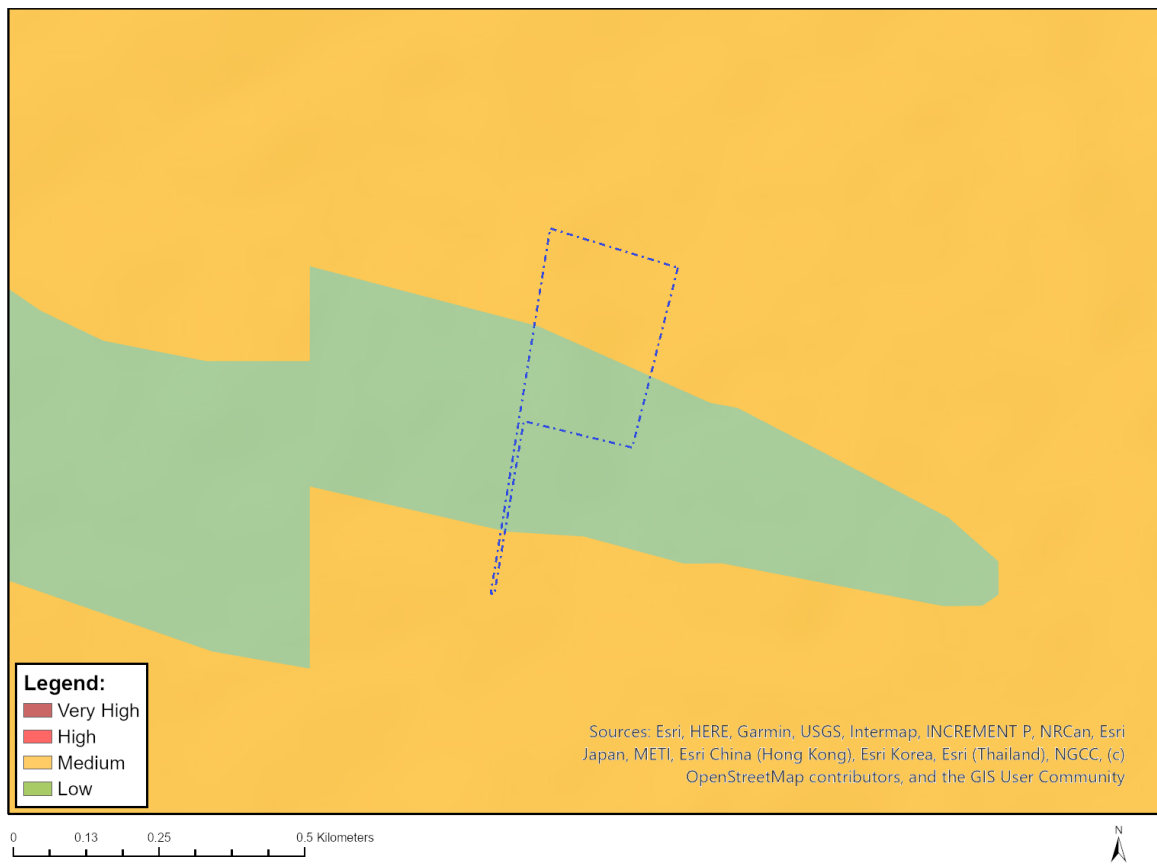


Very High sensitivity	High sensitivity	Medium sensitivity	Low sensitivity
			X

Sensitivity Features:

Sensitivity	Feature(s)
Low	Low Sensitivity

MAP OF RELATIVE PALEONTOLOGY THEME SENSITIVITY



Very High sensitivity	High sensitivity	Medium sensitivity	Low sensitivity
		X	

Sensitivity Features:

Sensitivity	Feature(s)
Low	Features with a Low paleontological sensitivity
Medium	Features with a Medium paleontological sensitivity

MAP OF RELATIVE PLANT SPECIES THEME SENSITIVITY



Where only a sensitive plant unique number or sensitive animal unique number is provided in the screening report and an assessment is required, the environmental assessment practitioner (EAP) or specialist is required to email SANBI at eiadatarequests@sanbi.org.za listing all sensitive species with their unique identifiers for which information is required. The name has been withheld as the species may be prone to illegal harvesting and must be protected. SANBI will release the actual species name after the details of the EAP or specialist have been documented.

Very High sensitivity	High sensitivity	Medium sensitivity	Low sensitivity
		X	

Sensitivity Features:

Sensitivity	Feature(s)
Low	Low Sensitivity
Medium	Lampranthus aureus
Medium	Lampranthus dilutus
Medium	Lampranthus filicaulis
Medium	Lampranthus leptaleon
Medium	Lampranthus peacockiae
Medium	Lampranthus scaber
Medium	Lampranthus sociorum
Medium	Lampranthus spiniformis
Medium	Antimima mucronata
Medium	Antimima aristulata
Medium	Erepsia ramosa
Medium	Ruschia diversifolia

Medium	<i>Drosanthemum hispidifolium</i>
Medium	<i>Cephalophyllum parviflorum</i>
Medium	<i>Indigofera psoraloides</i>
Medium	<i>Aspalathus aculeata</i>
Medium	<i>Aspalathus muraltioides</i>
Medium	<i>Aspalathus varians</i>
Medium	<i>Aspalathus wurmbeana</i>
Medium	<i>Rafnia lancea</i>
Medium	<i>Lebeckia plukenetiana</i>
Medium	<i>Lotononis complanata</i>
Medium	<i>Leucadendron corymbosum</i>
Medium	<i>Leucadendron lanigerum</i> var. <i>lanigerum</i>
Medium	<i>Leucadendron stellare</i>
Medium	<i>Leucospermum hypophyllocarpodendron</i> subsp. <i>canaliculatum</i>
Medium	<i>Protea burchellii</i>
Medium	<i>Protea mucronifolia</i>
Medium	<i>Serruria candicans</i>
Medium	<i>Serruria scoparia</i>
Medium	<i>Lobostemon capitatus</i>
Medium	<i>Echiostachys incanus</i>
Medium	<i>Hesperantha spicata</i> subsp. <i>spicata</i>
Medium	Sensitive species 631
Medium	Sensitive species 331
Medium	Sensitive species 74
Medium	<i>Geissorhiza brehmii</i>
Medium	<i>Geissorhiza furva</i>
Medium	<i>Geissorhiza tulbaghensis</i>
Medium	<i>Geissorhiza erosa</i>
Medium	<i>Sparaxis grandiflora</i> subsp. <i>grandiflora</i>
Medium	<i>Ixia abbreviata</i>
Medium	<i>Ixia sarmentosa</i>
Medium	Sensitive species 560
Medium	Sensitive species 1253
Medium	Sensitive species 572
Medium	Sensitive species 1
Medium	Sensitive species 1140
Medium	Sensitive species 995
Medium	Sensitive species 1146
Medium	Sensitive species 863
Medium	<i>Pauridia alba</i>
Medium	<i>Pauridia pygmaea</i>
Medium	<i>Monopsis variifolia</i>
Medium	<i>Oxalis droseroides</i>
Medium	<i>Oxalis involuta</i>
Medium	<i>Oxalis natans</i>
Medium	Sensitive species 222
Medium	Sensitive species 444
Medium	Sensitive species 1240
Medium	Sensitive species 756
Medium	<i>Annesorhiza refracta</i>
Medium	<i>Isoetes capensis</i>
Medium	Sensitive species 178
Medium	<i>Anisodonteia biflora</i>
Medium	Sensitive species 120
Medium	Sensitive species 266
Medium	<i>Pterygodium inversum</i>
Medium	<i>Pterygodium microglossum</i>
Medium	<i>Lachnaea uniflora</i>
Medium	<i>Metalasia capitata</i>
Medium	<i>Metalasia octoflora</i>

Medium	Marasmodes spinosa
Medium	Senecio cadiscus
Medium	Athanasia crenata
Medium	Agathosma latipetala
Medium	Muraltia macropetala
Medium	Sensitive species 1069
Medium	Sensitive species 1218
Medium	Sensitive species 1135
Medium	Sensitive species 382
Medium	Sensitive species 616
Medium	Sensitive species 449
Medium	Wurmbea inusta
Medium	Phylica stenopetala var. stenopetala
Medium	Phylica strigulosa
Medium	Ezoloba macrocarpa
Medium	Codonrhiza azurea
Medium	Skiatophytum skiatophytoides
Medium	Lampranthus debilis
Medium	Lampranthus glaucus
Medium	Xiphotheca reflexa
Medium	Psoralea alata
Medium	Aspalathus recurva
Medium	Aponogeton fugax
Medium	Sensitive species 593
Medium	Sensitive species 335
Medium	Sensitive species 599
Medium	Restio paludosus
Medium	Restio rigoratus
Medium	Lachnaea capitata
Medium	Lachnaea grandiflora
Medium	Cotula pusilla
Medium	Sensitive species 1225

MAP OF RELATIVE TERRESTRIAL BIODIVERSITY THEME SENSITIVITY



Very High sensitivity	High sensitivity	Medium sensitivity	Low sensitivity
X			

Sensitivity Features:

Sensitivity	Feature(s)
Very High	ESA 2: Restore from other land use
Very High	CBA 1: Terrestrial
Very High	EN_Swartland Alluvium Fynbos
Very High	CR_Swartland Shale Renosterveld