

Locality Map



- Legend**
- Air transport
 - LANDING STRIP
 - Artificial surfaces
 - EXCAVATION
 - Barriers
 - FENCE
 - Buildings
 - HOUSE
 - Inland water
 - NON-PERENNIAL PAN
 - River
 - NON-PERENNIAL CENTER LINE
 - Roads
 - R510
 - Vegetation
 - CULTIVATED LAND
 - TREE
 - Water source
 - RESERVOIR
 - Administrative region: KQ
 - Farm portions
 - Parent farms
 - District Municipalities 2012
 - Limpopo Province
 - Waterberg District Municipality
 - Thabazimbi Local Municipality
 - Ward: No 1
 - Stockpile Area

Proposed stockpiling area coordinates:
 A 24,304335°S; 27,415101°E
 B 24,303045°S; 27,418492°E
 C 24,306093°S; 27,418777°E
 D 24,307384°S; 27,415326°E
 E 24,306627°S; 27,414944°E
 F 24,306405°S; 27,415433°E
 G 24,306007°S; 27,415248°E
 H 24,305771°S; 27,415783°E

A 24°18'15,606"S; 27°24'54,364"E
 B 24°18'10,962"S; 27°25'6,571"E
 C 24°18'21,935"S; 27°25'7,597"E
 D 24°18'26,582"S; 27°24'55,174"E
 E 24°18'23,857"S; 27°24'53,798"E
 F 24°18'23,058"S; 27°24'55,559"E
 G 24°18'21,625"S; 27°24'54,893"E
 H 24°18'20,776"S; 27°24'56,819"E

Stockpiling application area:
 11,7 ha

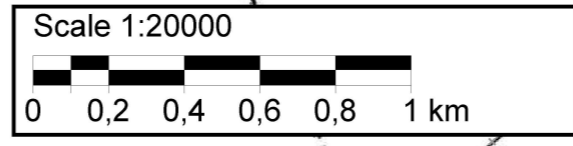
Client:



Consultant:



Please take note that the coordinates were derived from a GIS and not physically surveyed and is therefore an estimation only.



T2427AD

