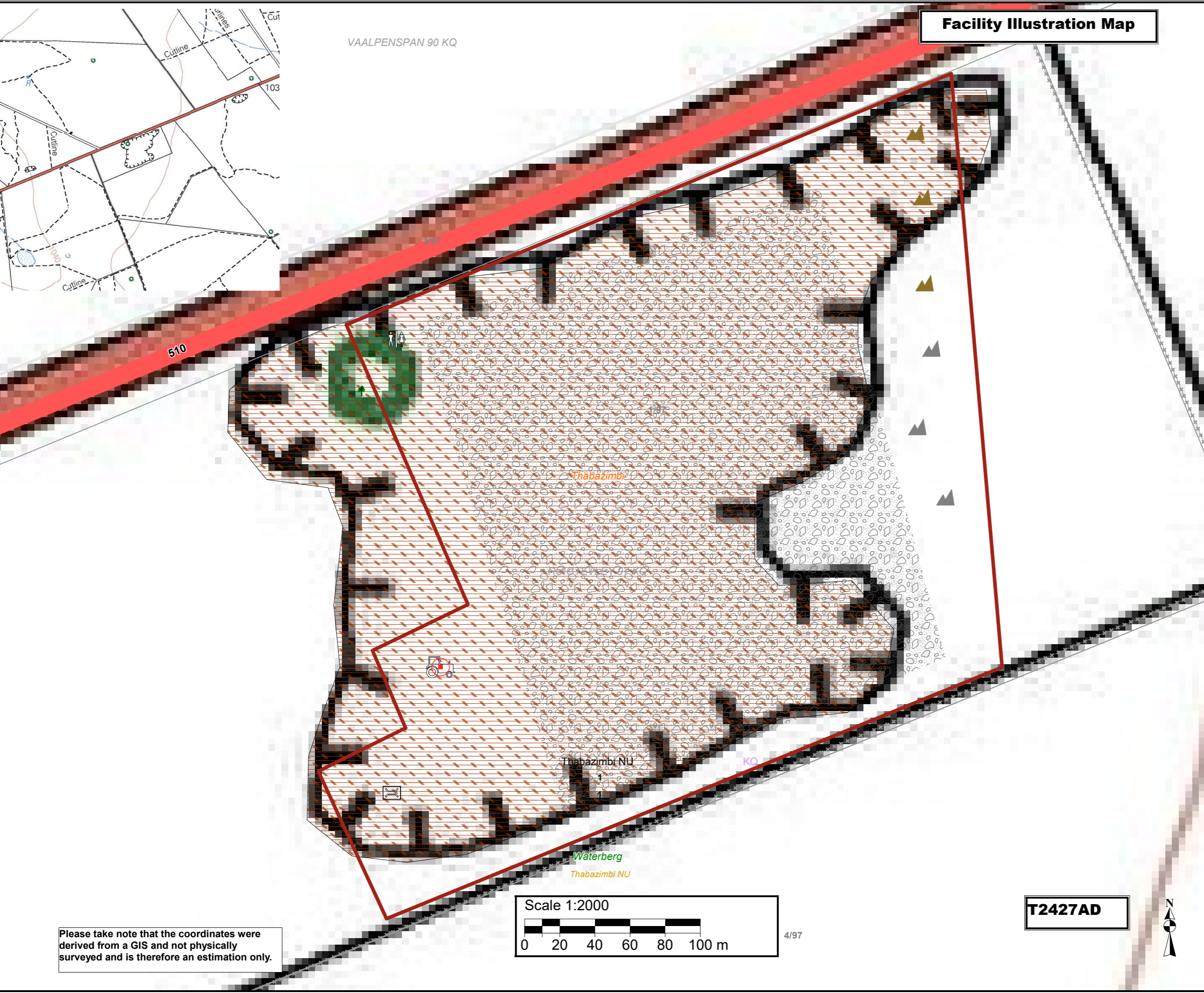


# Facility Illustration Map



- Legend**
- Air transport
  - LANDING STRIP
  - Artificial surfaces
  - EXCAVATION
  - Barriers
  - FENCE
  - Buildings
  - HOUSE
  - Inland water
  - NON-PERENNIAL PAN
  - River
  - NON-PERENNIAL CENTER LINE
  - Roads
  - R510
  - Vegetation
  - CULTIVATED LAND
  - TREE
  - Water source
  - RESERVOIR
  - Administrative region: KQ
  - Farm portions
  - Parent farms
  - District Municipalities 2012
  - Limopo Province
  - Waterberg District Municipality
  - Thabazimbi Local Municipality
  - Ward: No 1
  - Stockpile Area
  - Material Stockpiles
  - Overburden Stockpile
  - Stockpile Material Area
  - Topsoil Stockpile
  - Site toilet
  - Weighbridge
  - Mobile Machinery

Proposed stockpiling area coordinates:  
 A 24,304335°S; 27,415101°E  
 B 24,303045°S; 27,418492°E  
 C 24,306093°S; 27,418777°E  
 D 24,307384°S; 27,415326°E  
 E 24,306627°S; 27,414944°E  
 F 24,306405°S; 27,415433°E  
 G 24,306007°S; 27,415248°E  
 H 24,305771°S; 27,415783°E

A 24°18'15,606"S; 27°24'54,364"E  
 B 24°18'10,962"S; 27°25'6,571"E  
 C 24°18'21,935"S; 27°25'7,597"E  
 D 24°18'26,582"S; 27°24'55,174"E  
 E 24°18'23,857"S; 27°24'53,798"E  
 F 24°18'23,058"S; 27°24'55,559"E  
 G 24°18'21,625"S; 27°24'54,893"E  
 H 24°18'20,776"S; 27°24'56,819"E

Stockpiling application area:  
 11,7 ha

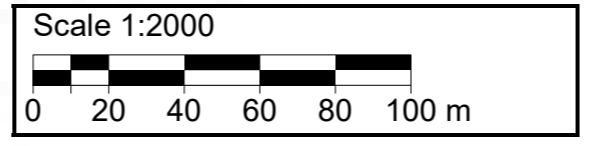
Client:



Consultant:



Please take note that the coordinates were derived from a GIS and not physically surveyed and is therefore an estimation only.



**T2427AD**